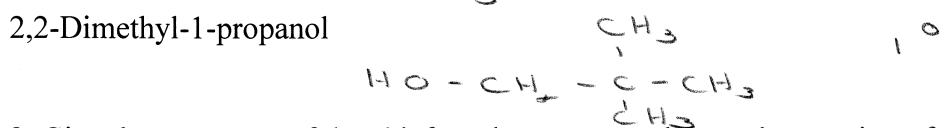
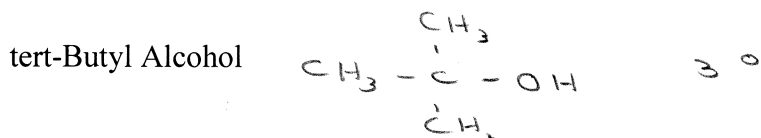
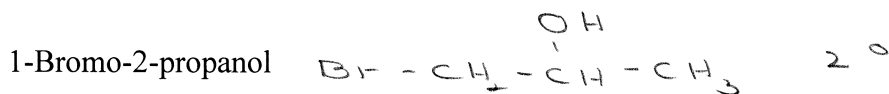
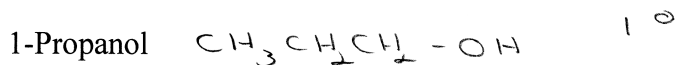
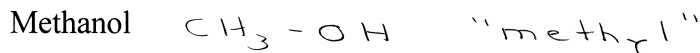
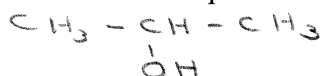


Chapter 6: "Alcohols and Ethers" Worksheet

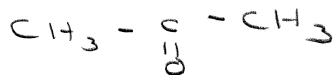
1. Draw out the structural formula and classify the following alcohols as 1°, 2° or 3°



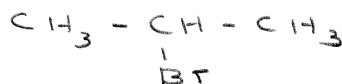
2. Give the structures of the chief products expected from the reaction of isopropyl alcohol with:



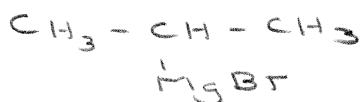
$\text{CrO}_3, \text{H}_2\text{SO}_4$



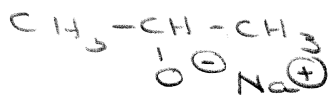
Conc. Aqueous HBr



Product above + Mg



Na



3. Using the Williamson Ether and starting with alcohols outline a possible synthesis for isopropyl n-propyl ether.

